

FOR SALE

FLAT - RETIREMENT

Parklands Court, Sketty,
Swansea, SA2 8LZ



70% SHARED OWNERSHIP

£77,000

Parklands Court, Sketty, Swansea, SA2 8LZ

Parklands Court in Sketty, a retirement complex that comes with a range of amenities to simplify your life. We offer a 2 bedroom apartment for sale situated on the first floor flat offers a perfect blend of comfort and independence for those over 55's. With lift access the apartment comprises of an entrance hall, leading to a lounge with archway taking you into the kitchen. Two bedrooms and a shower room.

One of the standout features of Parklands Court is its prime location. With convenient shopping facilities just a stone's throw away, including a post office, supermarket, and chemist, daily errands are a breeze. Easy access to bus routes makes exploring the City Centre, Mumbles, and Gower effortless, allowing you to enjoy all that Swansea has to offer.

The residents' lounge provides a welcoming space for social gatherings, ensuring you can enjoy the company of neighbours during coffee mornings and afternoon teas. There is also a communal kitchen, Landry room and an on-site manager ensuring your needs are met promptly. Don't miss out on this fantastic opportunity to embrace a relaxed and convenient retirement lifestyle at Parklands Court. Book a viewing today and discover the joys of retirement living in this charming Sketty community.

The Accommodation Comprises

Communal Hall



Hall

Entered via front door, fitted carpet, wall mounted electric heater.

Lounge/Dining Room

13'6" x 17'3" (4.12m x 5.26m)
Double glazed window, fitted carpet, wall mounted electric heater, open plan to the kitchen.



Kitchen

8'3" x 5'3" (2.51m x 1.61m)

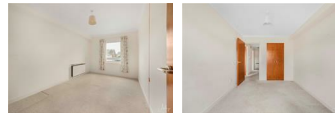
Fitted with a matching range of wall and base units with worktop space over, sink unit, space for fridge/freezer, part tiled walls, vinyl flooring.



Bedroom 1

8'9" x 15'10" (2.66m x 4.83m)

Double glazed window, fitted wardrobes, fitted carpet, wall mounted electric heater.



Bedroom 2

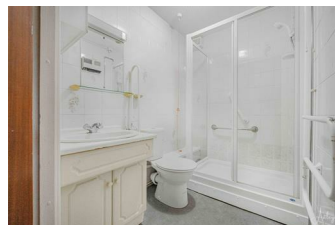
13'6" x 8'0" (4.12m x 2.45m)

Double glazed window, storage cupboard housing water boiler, fitted wardrobes, fitted carpet, wall mounted electric heater.



Shower Room

Fitted three piece suite comprising shower cubicle, wash hand basin and WC, vinyl flooring, heated towel rail.



Communal Lounge/Dining Room

Parklands Court, Sketty, Swansea, SA2 8LZ



Communal Kitchen



Communal Laundry Room



Parking



Tenure

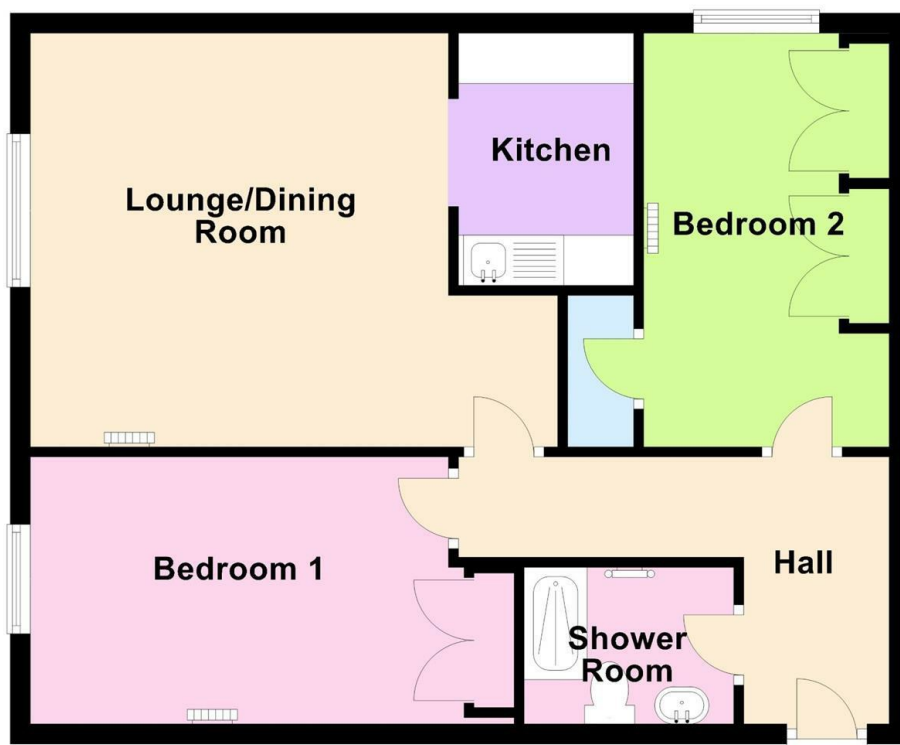
Leasehold 60 years

Council Tax - C

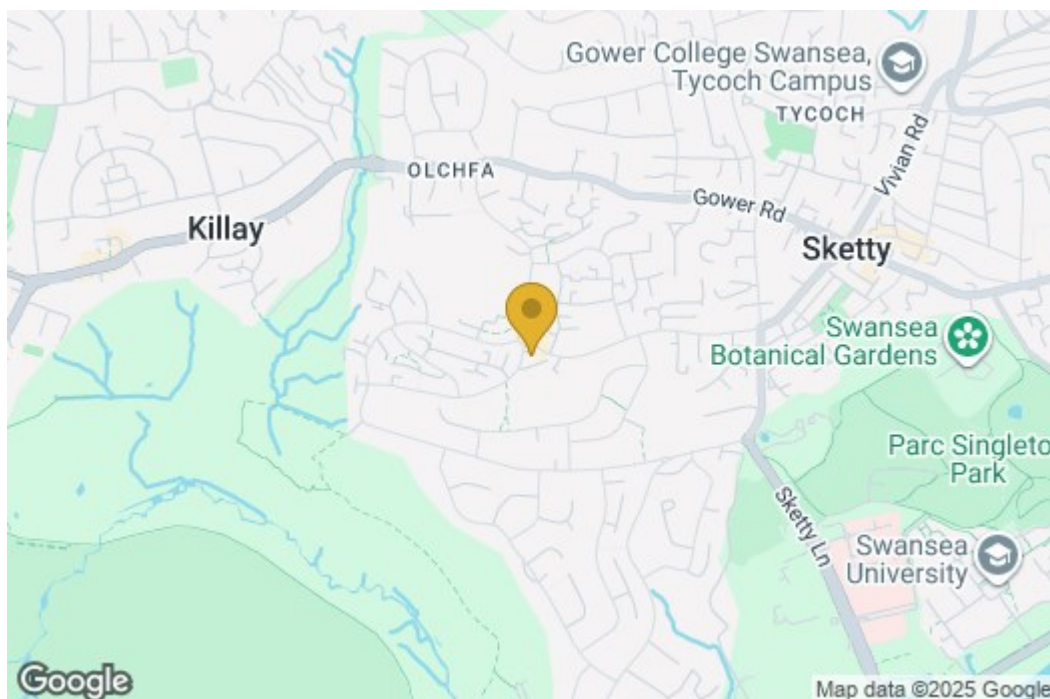
Annual Service Charge - £221.79

Floor Plan

Floor Plan



Area Map



Energy Efficiency Graph

